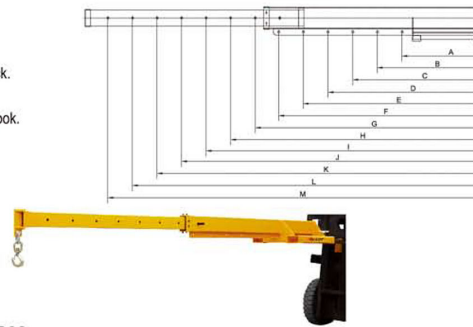


Telescopic Fork Mounted Jibs TLB03 / TLB01 SERIES

- ▲ Convert a forklift truck into a mobile crane to reach and transport long and awkward loads from inaccessible location.
- ▲ Verify load centre of forklift truck.
- ▲ Safety chain welded to boom has grab hools for anchoring jib boom to forklift truck.
- ▲ Zinc plated fork heels pin for safe forklift attachment.
- ▲ Supplied complete with one safety swived hook with bow shackle and one rigid hook.

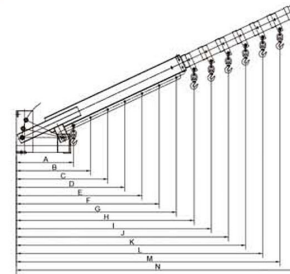
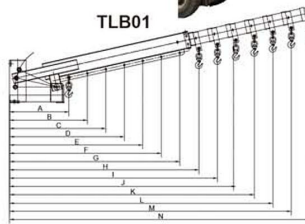
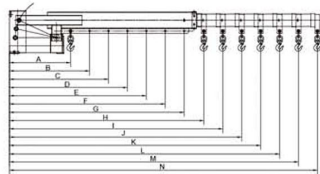


TLB03

i-Lift No. / Model	1810303 / TLB03												
Positions	A	B	C	D	E	F	G	H	I	J	K	L	M
(mm)	755	985	1215	1445	1675	1905	2125	2355	2580	2810	3040	3270	3500
Capacity (kg)	3000	2300	1865	1570	1355	1190	1065	960	875	805	745	690	640
Fork Opening (mm)	464												
Fork Pockets (mm)	180x60												
Overall Size (mm)	2168x660x324												
Packing Size (mm)	2180x680x444												
Net Weight (kg)	188												



TLB01



Tilt Angle: 0°

Tilt Angle: 13°

Tilt Angle: 26°

i-Lift No. / Model	1810301 / TLB01													
Positions	A	B	C	D	E	F	G	H	I	J	K	L	M	N
0° (mm)	740	969	1198	1427	1656	1885	2114	2352	2581	2810	3039	3268	3497	3726
Capacity (kg)	3000	2291	1853	1556	1341	1178	1050	944	860	790	730	679	635	596
13° (mm)	718	942	1165	1389	1612	1836	2060	2292	2516	2739	2963	3186	3410	3633
Capacity (kg)	3092	2357	1906	1598	1377	1209	1078	969	882	811	749	697	651	611
26° (mm)	690	897	1105	1312	1520	1727	1935	2150	2358	2566	2772	2980	3188	3395
Capacity (kg)	3217	2475	2009	1692	1460	1285	1147	1032	941	865	801	745	696	654
Fork Opening (mm)	346													
Fork Pockets (mm)	180x74													
Overall Size (mm)	2322x542x512													
Packing Size (mm)	2340x560x630													
Net Weight (kg)	240													

"RCV HANDLING MACHINERY" :: HHF 037A, Industrial Estate, BBG 3000, HAL-FAR, Malta

Tel: +356 2148 5681 :: Fax: +356 2144 1747 :: Mob: +356 9905 4096

Vat Nr. MT1467-3111

email: info@rcvmalta.com :: Web: rcvmalta.com