

Battery forklift with AC motor technology

# 25/30/32/35B-9U



# A NEW LEVEL OF SATISFACTION FOR OWNERS AND OPERATORS

Hyundai is proud to introduce its new B-9U Series electric forklifts. These high-performing machines feature numerous upgrades, including technologies to reduce energy consumption and noise. Powertrain durability has been enhanced, the driver compartment has been redesigned for safe, comfortable operation and maintenance is easier than ever before.

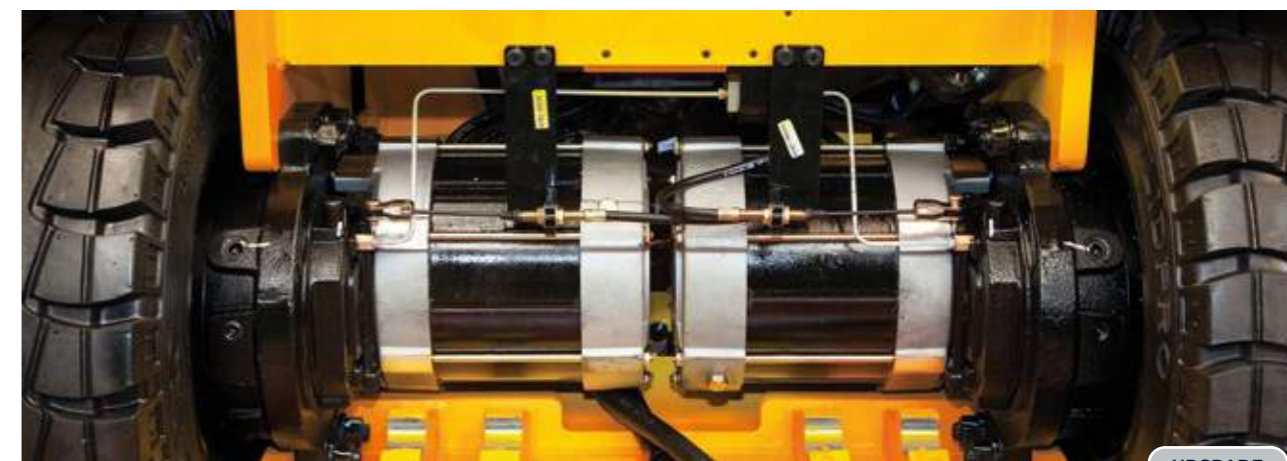




Productivity & Efficiency

# SMOOTH AND EFFICIENT TO BOOST YOUR PRODUCTIVITY

The B-9U Series has been enhanced with new details and technologies to improve operating performance and efficiency. The powerful dual drive motor system is combined with Electro Hydraulic Power Steering (EHPS) to ensure smooth, quiet operation with minimal maintenance.



UPGRADE

**Dual drive motor system for strong driving power**

The dual drive motor system consists of two separately controlled low-noise drive motors ensuring excellent drawbar pull and a short turning radius. The AC motors are virtually maintenance free.



UPGRADE

**Electro Hydraulic Power Steering (EHPS)**

The ZAPI EHPS system offers speed adaptive steering feedback and allows each operator to set up personalised parameters. It also reduces energy consumption and noise.



UPGRADE

**Dual MiCOM ZAPI controller**

B-9U Series forklifts feature a new ZAPI ACE controller with dual MiCOM technology enabling fast communication and self-diagnosis. The split system incorporates separate controllers, with IP65 level dust and water protection, for each motor.



**Auto fork levelling system**

This feature ensure that mast tilting stops smoothly when the forks are in level position, improving both productivity and safety.

OPTION



**Tailored performance for different working conditions**

Different working modes optimise the forklift's performance depending on parameters such as speed of operation, maximum working time and operator proficiency.

- H:** High Performance mode with fast driving and lifting speeds
- N:** Normal mode with balanced performance and energy consumption
- E:** Economy mode maximising battery autonomy

**Reduced energy consumption**

The newly applied ZAPI EHPS system significantly reduces energy consumption. As a result, running costs are lower and operating time is extended.

Previous model: 8.5Kw/h
<b>Upgraded model (25B-9U): 7.3Kw/h</b>

*The figures above are based on Hyundai's test results for a single charge cycle and may differ from actual working conditions.*



OPTION

## Productivity & Efficiency

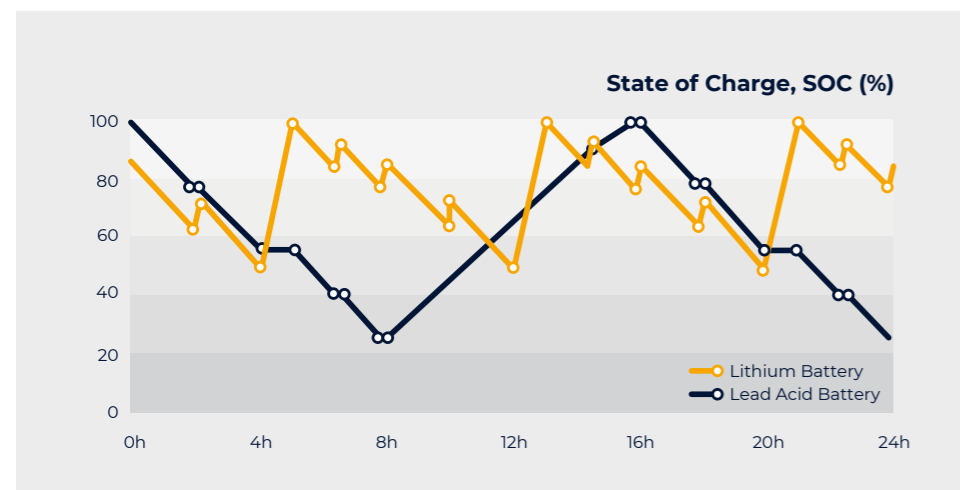
# OPTIMISE YOUR MACHINE WITH A HIGH-QUALITY LI-ION BATTERY

Lithium-ion (Li-ion) batteries ensure high equipment performance and allow extended hours of continuous operation through the use of fast, high-current opportunity charging. The Hyundai Li-ion battery uses Samsung prismatic NMC cells, ensuring excellent performance and safety with virtually zero maintenance. With double the lifespan of a traditional lead-acid battery, accompanied by a 5-year warranty, it significantly lowers the total operating cost of your forklift.

Li-ION battery capacity:  
- 25/30/32/35B-9U: 51.5 V/564 Ah



Comparison of charge and discharge



## Why choose a Hyundai Li-ion battery?



### Longer operating time

- Extended battery autonomy through use of short opportunity charges during breaks
- No need for spare batteries or charging facilities



### Increased safety

- Multi-layered protection on cell
- Enclosed battery case made of high-strength steel
- No hazardous gases produced during charging process



### Minimal maintenance

- No need to replenish distilled water or electrolytes
- Battery lifespan at least double that of lead acid/sulfuric acid batteries (over 4,000 cycles)
- No harmful gas emissions and no restrictions on the charging location



### Lower costs

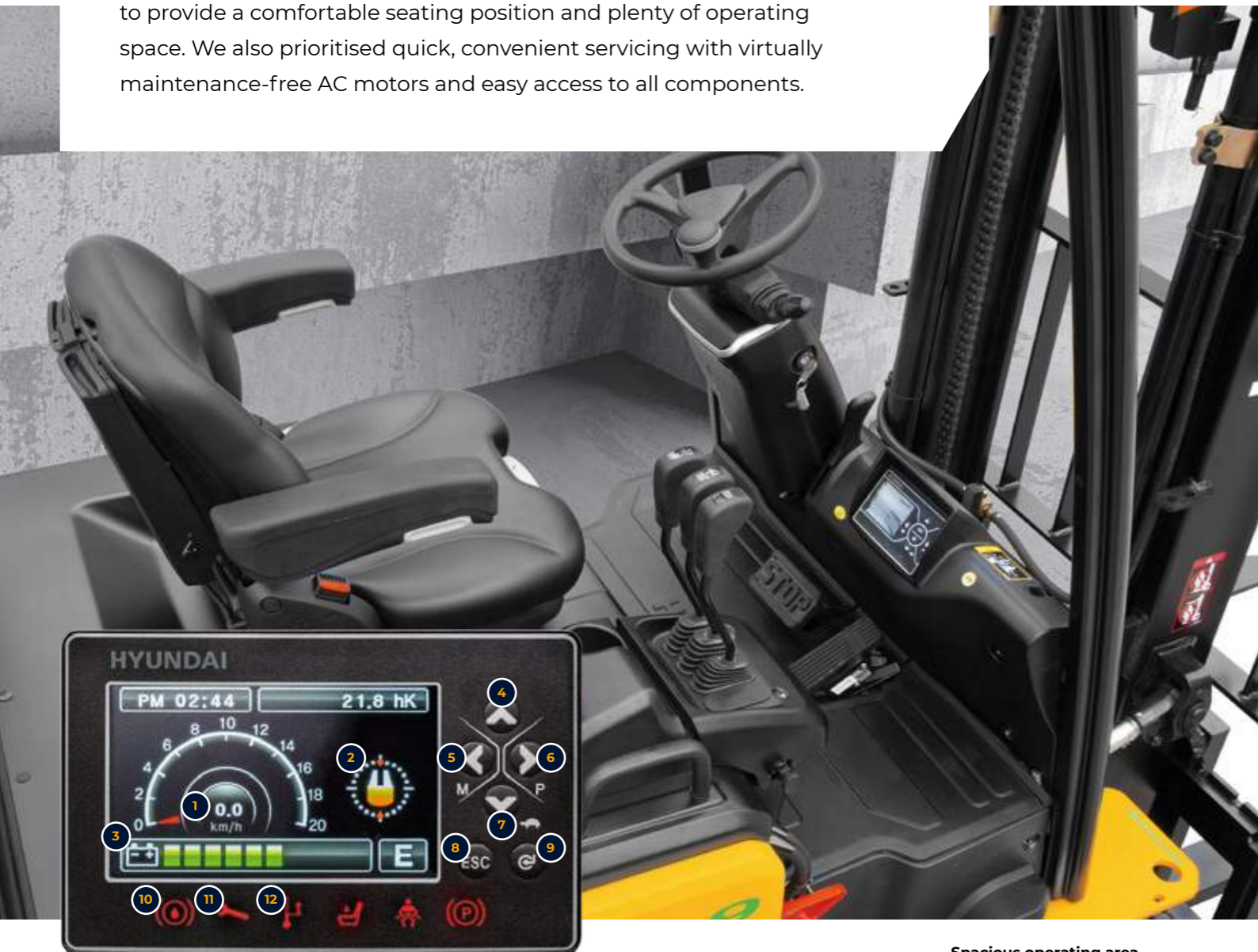
- Higher charging efficiency than lead acid batteries (80% → 90%)
- Zero downtime for maintenance



## Operating comfort

# DESIGNED FOR COMFORT AND QUICK, EASY MAINTENANCE

For the B-9U Series, we optimised ergonomics wherever possible to provide a comfortable seating position and plenty of operating space. We also prioritised quick, convenient servicing with virtually maintenance-free AC motors and easy access to all components.



### 4.3 inch LCD colour monitor

The 4.3 inch LCD smart graphic display gives the driver an overview of essential information. The menu is available in 11 different languages. Intuitive selection buttons next to the display create the perfect tool for machine set-up and on-board diagnosis.

- |  |                            |                                  |
|--|----------------------------|----------------------------------|
| 1 Speed (digital)                              | 5 Menu/Scroll left         | 10 Low brake oil warning lamp    |
| 2 Steering wheel position and travel direction | 6 Performance/Scroll right | 11 Error warning lamp            |
| 3 Battery discharge indicator                  | 7 Turtle/Scroll down       | 12 High temperature warning lamp |
| 4 Scroll up                                    | 8 ESC/Back                 |                                  |
|  | 9 Enter                    |                                  |

### Spacious operating area

The newly designed driver compartment increases operating space, visibility and overall comfort for the operator.



OPTION

### Fingertip control levers

Adjustable, ergonomically designed fingertip control levers are available as an option to increase operator comfort and productivity.



### Continental SC18 solid tyres as standard

B-9U Series forklifts are equipped with Continental SC18 solid tyres, offering a long, trouble-free service life with reduced energy consumption.



### Adjustable steering column

The steering column can be adjusted to the operator's preferred position using a simple lever.



### Display options

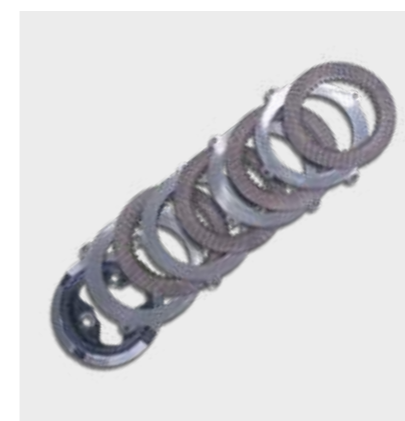
As a standard feature, the driver can choose between two display layouts. If equipped with the optional load indicator, the loaded weight is shown on the display.



OPTION

### Full and semi-cabin options

The forklift can be equipped with a heated full cabin or a semi-cabin, depending on your needs.



### Wet disc brake

Wet disc brakes are low-maintenance, do not pollute the air and provide constant braking force without overheating.



### Low-vibration comfort seat

The B-9U Series features a wide, high-quality Grammer seat allowing the operator to work comfortably and reducing fatigue. The suspension, armrests and backrest are adjustable and additional seat options are available to further customise the machine to your preferences.



### Directional & horn switch on lever

The electronic directional switch integrated in the lift lever is easy to use and helps operators to work more productively.



Safety

# VISIBILITY AND CONTROL FOR A SAFER WORKPLACE

The B-9U Series is designed to help operators work more safely and confidently. This is achieved through a range of control and feedback features, as well as all-round visibility.



UPGRADE

**Speed adaptive steering feedback & Curve Control**

The speed adaptive steering feedback system offers:

- Light steering force at a low speed, for reduced driver effort and high productivity
- Stiffer steering force at a high speed, ensuring high driving stability and a relaxed drive

The Curve Control system limits travel speed based on the turning radius, ensuring that turn manoeuvres are smooth and precise.



UPGRADE

**Improved steering control**

Steering ergonomics have been improved by synchronising the position of the steering knob.



OPTION

**Beacon lamp & Blue Spot light**

An LED beacon lamp and Blue Spot light are available as options to increase safety for operators and pedestrians.



**LED lights**

LED combination lights and optional LED working lights offer excellent visibility in all circumstances, with very low energy consumption.



**Anti-rollback system**

B-9U Series forklifts feature an anti-rollback system that prevents the machine from rolling back on a slope and offers exceptional drive-off capabilities.



NEW

OPTION

**Camera options**

Two camera options are available for maximum convenience:

- An automatically activated rear view camera, integrated in the cluster
- A front view camera, displayed in a separate monitor



**Excellent visibility from the driver's space**

The lift cylinder arrangement has been optimised to provide good visibility for the operator. A panoramic mirror is included and two camera options are available to further increase safety for the operator and pedestrians.



## Walk-around

# 25/30/32/35B-9U

### Productivity & efficiency

- ZAPI Electro Hydraulic Power Steering (EHPS) system for 17% better energy efficiency
- Dual drive motors for powerful, precise driving performance
- Performance optimised for various working conditions
- Ergonomically designed directional & horn switch located on hydraulic controls
- Single or two-door bolt-on type cabin

OPTION



### Safety

- Speed adaptive steering feedback increases driving stability
- Curve Control reduces driving speed when entering a curve
- Anti-rollback feature prevents rolling backwards on a slope
- Maximum driving speed setting
- Operator Presence Sensing System (OPSS)

### Durability

- Dual MiCOM ZAPI ACE Controllers (master & slave type) with improved data processing speed
- Wet disc brakes
- IP43 motor & IP65 controller

### Easy maintenance

- Lateral battery exchange system (roller-type)
- Quality proven Continental SC18 solid tyre
- On-board diagnosis and parameter set-up

Parts & Warranties

# HYUNDAI GENUINE PARTS AND WARRANTIES: THE BEST WAY TO PROTECT YOUR INVESTMENT

Hyundai Genuine parts, accessories and warranty programmes are specially designed to keep your investment covered. They increase uptime and maintain the performance, comfort, and convenience that are built into your equipment.



## Leader in standard warranties for battery Forklifts!

Hyundai warranties are designed to give you the cover you need to build your business with confidence and peace of mind.

## Best standard warranties in the industry

For extra reassurance, and to ensure maximum customer confidence, we are supplying all new battery models with best industry standard warranties.

The forklift **standard warranty covers you for two years or 3,000 hours, whichever comes first.**

## Optional and extended warranty periods

In addition to this standard coverage, optional and extended warranty periods are available, allowing you to benefit from full warranty coverage for longer, and even over the full service life of your forklift.\*

**Forklift standard warranty\***  
**2 years** or 3,000 hours, whichever comes first.

## Hyundai Genuine parts

Hyundai Genuine parts have the same design as those installed when your machine left the factory. They are subjected to rigorous quality inspections and tests to make sure they meet Hyundai's strict requirements for quality and durability.

As well as minimising downtime, this helps to ensure peak performance on every task. In the 13,000 m<sup>2</sup> warehouse, **Hyundai covers over 96% of all Genuine Parts.** With one of Europe's most advanced automated warehousing systems, we are able to maintain availability and efficient delivery of all our Genuine Parts.

## A network you can rely on

HCEE prioritises quick, reliable intervention to keep your equipment running reliably. Thanks to the **extended dealer network across Europe, we will always be close by to ensure a timely and efficient solution.** Moreover, we guarantee a 24-hour delivery service across our European dealer network.

\* Conditions apply. Please discuss the optimal solution for your needs with your dealer.



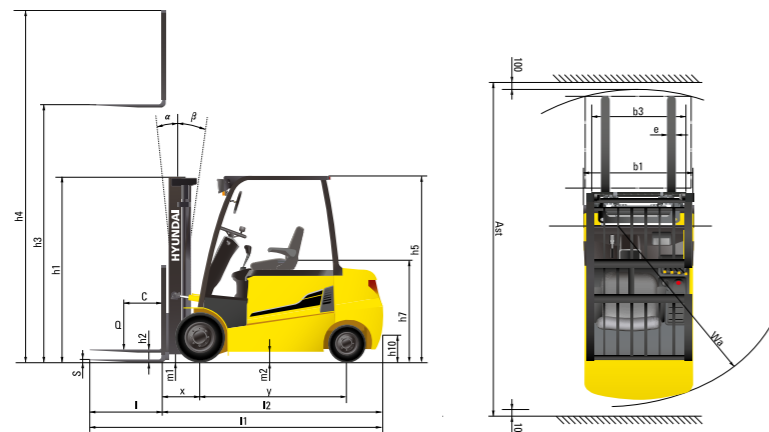


# SPECIFICATIONS

Main characteristics						
1.1	Manufacturer (abbreviation)		Hyundai	Hyundai	Hyundai	Hyundai
1.2	Manufacturer's type designation		25B-9U	30B-9U	32B-9U	35B-9U
1.3	Drive : Electric (battery or mains), Diesel, Petrol, Fuel Gas		electric	electric	electric	electric
1.4	Type of operation: Hand, Pedestrian, Standing, Seated, Order-Picker		seated	seated	seated	seated
1.5	Load Capacity / Rated Load	kg	2,500	3,000	3,200	3,500
1.6	Load Center Distance	c mm	500	500	500	500
1.8	Load Distance, Center Of Drive Axle To Fork	x mm	458	458	458	470
1.9	Wheelbase	y mm	1,400	1,600	1,600	1,600

Weights						
2.1	Service weight	kg	4,360	4,633	4,820	5,020
2.2	Axle loading, loaded front/rear	kg	6,016/844	6,812/820	7,095/925	7,537/983
2.3	Axle loading, unloaded front/rear	kg	1,805/2,555	2,016/2,617	1,980/2,840	1,915/3,105

Tyres & chassis						
3.1	Tyres : Solid Rubber, Superelastic, Pneumatic, Polyurethane		SE, P	SE, P	SE, P	SE, P
3.2	Tyre size, front		23X9-10	23x9-10	23x9-10	23X10-12
3.3	Tyre size, rear		18X7-8	18x7-8	18x7-8	18X7-8
3.5	Wheels, number front/rear (X = Driven Wheels)		2x/2	2x/2	2x/2	2x/2
3.6	Tread, front	mm	993	993	993	1005
3.7	Tread, rear	mm	980	980	980	980



Dimensions						
4.1	Tilt of mast/fork carriage forward/backward	degree	6/10	6/10	6/10	6 / 10
4.2	Height, mast lowered	h1 mm	2,162	2,162	2,232	2,243
4.3	Free lift	h2 mm	115	115	115	115
4.4	Lift height	h3 mm	3,300	3,300	3,300	3,300
4.5	Height, mast extended	h4 mm	4,485	4,485	4,485	4,485
4.7	Height of overhead guard (cabin)	h5 mm	2,230 (2,276)	2,230 (2,276)	2,230 (2,276)	2,230 (2,276)
4.8	Seat height / stand height rel. to sip	h7 mm	1,275	1,275	1,275	1,275
4.12	Coupling height	h10 mm	325	325	325	325
4.19	Overall length	l1 mm	3,345	3,535	3,553	3,640
4.20	Length to face of forks	l2 mm	2,295	2,485	2,503	2,590
4.21	Overall width	b1 mm	1,200	1,200	1,200	1,250
4.22	Fork dimensions	s x e x l mm	45x100x1,050	45x122x1,050	45x122x1,050	45x122x1,050
4.23	Fork carriage ISO 2328, class / type A, B		II /A	III /A	III /A	III /A
4.24	Fork carriage width	b3 mm	1,102	1,102	1,102	1,102
4.31	Ground clearance, below mast, loaded	m1 mm	117	117	117	128
4.32	Ground clearance, center of wheelbase	m2 mm	130	130	130	130
4.33	Aisle width for pallets 1,000 X 1,200 crossways (L X W)	Ast mm	3,637	3,829	3,843	3,896
4.34	Aisle width of pallets 800 X 1,200 crossways (W X L)	Ast mm	3,803	4,009	4,023	4,076
4.35	Turning radius	Wa mm	1,940	2,150	2,165	2,205

Performance data						
5.1	Travel speed, loaded/unloaded	km/h	17/18	17/18	17/18	17/18
5.2	Lift speed, loaded/unloaded	mm/s	410/610	340/500	330/500	300/460
5.3	Lowering speed, loaded/unloaded	mm/s	500/450	500/450	500/450	500/450
5.6	Max. drawbar pull, loaded/unloaded	N	14,710/14,690	14,640/14,700	14,580/14,660	14,580/14,410
5.8	Max. gradeability, loaded/unloaded	% (°)	20 (12.4)	19 (10.8)	18 (10.2)	17 (9.6)
5.10	Service brake		Hydraulic	Hydraulic	Hydraulic	Hydraulic

Electric motor						
6.1	Drive motor rating S2 60 Min	kW	7.0x2	7.0x2	7.0x2	7.0x2
6.2	Lift motor rating at S3 15%	kW	17	17	17	17
6.4	Battery voltage, nominal capacity K5	V/Ah	48 / 720	48 / 810-900	48 / 810-900	48 / 810-900
6.5	Battery weight (Min.)	kg	1,090	1,150	1,150	1,150
6.7	Battery compartment dimensions L/W/H	mm	1,035/802/540	1,035/1,000/540	1,035/1,000/540	1,035/1,000/540

Additional data						
8.1	Type of drive control	AC	AC	AC	AC	AC



# MAST SPECIFICATIONS

25B-9U													
Mast type	Maximum fork height	Maximum mast height, extended with backrest	Overall height (lowered)	Free lift height			Tilt angle		Load capacity (500 mm LC) w/o side shift	Load capacity (500 mm LC) hook-on side shift	Maximum lifting height with rated capacity STD attachment	Truck weight (unloaded)	
				W/ load backrest	W/o load backrest	W/o load backrest (3/4-SPOOL)	Fwd	Bwd					
	mm	mm	mm	mm	mm	mm	deg	deg	kg	kg	mm	kg	
2-stage limited free lift	V300	3,005	4,185	2,012	115	115	115	6	10	2,500	2,500	3,005	4,339
	※V330	3,305	4,485	2,162	115	115	115	6	10	2,500	2,500	3,305	4,362
	V350	3,505	4,685	2,262	115	115	115	6	10	2,500	2,500	3,505	4,376
	V370	3,705	4,885	2,412	115	115	115	6	10	2,500	2,475	3,705	4,398
	V400	4,005	5,185	2,562	115	115	115	6	10	2,500	2,425	4,005	4,419
	V450	4,505	5,685	2,862	115	115	115	6	6	2,400	2,325	3,650	4,498
	V500	5,005	6,185	3,112	115	115	115	6	6	2,350	2,275	3,500	4,535
2-stage full free lift	VF295	2,976	4,156	2,012	832	1,379	1,379	6	6	2,500	2,500	2,976	4,386
	VF/VS325	3,276	4,456	2,162	982	1,529	1,529	6	6	2,500	2,500	3,276	4,419
3-stage full free lift	TF400	4,005	5,185	1,912	732	1,279	1,279	6	6	2,500	2,425	4,005	4,538
	TF430	4,305	5,485	2,012	832	1,379	1,379	6	6	2,450	2,375	3,700	4,560
	TF450	4,505	5,685	2,112	932	1,479	1,479	6	6	2,400	2,325	3,550	4,582
	TF470	4,705	5,885	2,162	982	1,529	1,529	6	6	2,350	2,275	3,450	4,594
	TF500	5,005	6,185	2,262	1,082	1,629	1,629	6	6	1,880	1,850	3,400	4,618
	TF550	5,505	6,685	2,462	1,282	1,829	1,829	6	6	1,550	1,430	3,300	4,659
	TF600	6,005	7,185	2,662	1,482	2,029	2,029	6	6	1,400	1,280	3,200	4,698
	TF650	6,505	7,685	2,862	1,682	2,061	1,921	3	3	1,350	1,230	3,050	4,737
	TF700	7,005	8,185	3,062	1,882	2,261	2,121	3	3	1,150	930	2,950	4,773
	TS400	4,005	5,185	1,912	732	1,279	1,279	6	6	2,500	2,425	4,005	4,538
	TS430	4,305	5,485	2,012	832	1,379	1,379	6	6	2,450	2,375	3,700	4,560
	TS450	4,505	5,685	2,112	932	1,479	1,479	6	6	2,400	2,325	3,550	4,582
	TS470	4,705	5,885	2,162	982	1,529	1,529	6	6	2,350	2,275	3,450	4,594
	TS500	5,005	6,185	2,262	1,082	1,629	1,629	6	6	1,880	1,850	3,400	4,618
TS550	5,505	6,685	2,462	1,282	1,829	1,829	6	6	1,550	1,430	3,300	4,659	
TS700	7,005	8,185	3,062	1,882	2,254	2,114	3	3	1,150	930	2,950	4,773	
4-stage full free lift	QF610	6,115	7,295	2,147	967	1,413	1,462	3	3	1,650	1,480	2,900	4,912
	QF700	7,015	8,195	2,447	1,267	1,713	1,762	3	3	1,300	980	2,600	5,002
	QF790	7,915	9,095	2,747	1,567	2,114	1,762	3	3	750	480	2,300	5,148

※ TF-Mast : Wide visible 3-stage full free lift mast with 1 free lift cylinder  
 ※ TS-Mast : Wide visible 3-stage full free lift mast with 2 free lift cylinders

※ : Standard

# MAST SPECIFICATIONS

30B-9U													
Mast type	Maximum fork height	Maximum mast height, extended with backrest	Overall height (lowered)	Free lift height			Tilt angle		Load capacity (500 mm LC) w/o side shift	Load capacity (500 mm LC) hook-on side shift	Maximum lifting height with rated capacity STD attachment	Truck weight (unloaded)	
				W/ load backrest	W/o load backrest	W/o load backrest (3/4-SPOOL)	Fwd	Bwd					
	mm	mm	mm	mm	mm	mm	deg	deg	kg	kg	mm	kg	
2-stage limited free lift	V300	3,005	4,185	2,012	115	115	115	6	10	3,000	3,000	3,005	4,614
	※V330	3,305	4,485	2,162	115	115	115	6	10	3,000	3,000	3,305	4,633
	V350	3,505	4,685	2,262	115	115	115	6	10	3,000	3,000	3,505	4,650
	V370	3,705	4,885	2,412	115	115	115	6	10	3,000	3,000	3,705	4,672
	V400	4,005	5,185	2,562	115	115	115	6	10	3,000	3,000	4,005	4,694
	V450	4,505	5,685	2,862	115	115	115	6	6	3,000	2,950	4,505	4,772
	V500	5,005	6,185	3,112	115	115	115	6	6	2,900	2,775	4,650	4,809
2-stage full free lift	VF295	2,976	4,156	2,012	832	1,379	1,379	6	6	3,000	3,000	2,976	4,634
	VF/ VS325	3,276	4,456	2,162	982	1,529	1,529	6	6	3,000	2,950	3,276	4,667
3-stage full free lift	TF400	4,005	5,185	1,912	732	1,217	1,181	6	6	3,000	3,000	4,005	4,801
	TF430	4,305	5,485	2,012	832	1,317	1,281	6	6	3,000	2,950	4,305	4,821
	TF450	4,505	5,685	2,112	932	1,417	1,417	6	6	3,000	2,875	4,505	4,848
	TF470	4,705	5,885	2,162	982	1,467	1,431	6	6	2,950	2,825	4,500	4,863
	TF500	5,005	6,185	2,262	1,082	1,567	1,531	6	6	2,250	2,180	4,400	4,889
	TF550	5,505	6,685	2,462	1,282	1,767	1,767	6	6	1,750	1,570	4,300	4,931
	TF600	6,005	7,185	2,662	1,482	1,967	1,967	6	6	1,450	1,270	4,200	4,971
	TF650	6,505	7,685	2,862	1,682	2,061	1,921	3	3	1,400	1,220	4,100	5,012
	TF700	7,005	8,185	3,062	1,882	2,261	2,121	3	3	1,200	1,020	4,000	5,052
	TS400	4,005	5,185	1,912	732	1,217	1,153	6	6	3,000	3,000	4,005	4,801
	TS430	4,305	5,485	2,012	832	1,317	1,253	6	6	3,000	2,950	4,305	4,821
	TS450	4,505	5,685	2,112	932	1,417	1,403	6	6	3,000	2,875	4,505	4,848
	TS470	4,705	5,885	2,162	982	1,467	1,403	6	6	2,950	2,825	4,500	4,863
	TS500	5,005	6,185	2,262	1,082	1,567	1,503	6	6	2,250	2,180	4,400	4,889
TS550	5,505	6,685	2,462	1,282	1,767	1,753	6	6	1,750	1,570	4,300	4,931	
TS600	6,005	7,185	2,662	1,482	1,967	1,953	6	6	1,450	1,270	4,200	4,971	
TS700	7,005	8,185	3,062	1,882	2,233	2,093	3	3	1,200	1,020	4,000	5,052	
4-stage full free lift	QF610	6,115	7,295	2,147	967	1,514	1,514	3	3	1,700	1,520	3,550	5,153
	QF700	7,015	8,195	2,447	1,267	1,814	1,814	3	3	1,200	1,020	3,300	5,243
	QF790	7,915	9,095	2,747	1,567	1,987	1,834	3	3	700	520	3,000	5,390

※ TF-Mast : Wide visible 3-stage full free lift mast with 1 free lift cylinder  
 ※ TS-Mast : Wide visible 3-stage full free lift mast with 2 free lift cylinders

※ : Standard



# MAST SPECIFICATIONS

32B-9U													
Mast type	Maximum fork height	Maximum mast height, extended with backrest	Overall height (lowered)	Free lift height			Tilt angle		Load capacity (500 mm LC) w/o side shift	Load capacity (500 mm LC) hook-on side shift	Maximum lifting height with rated capacity STD attachment	Truck weight (unloaded)	
				W/ load backrest	W/o load backrest	W/o load backrest (3/4-SPOOL)	Fwd	Bwd					
	mm	mm	mm	mm	mm	mm	deg	deg	kg	kg	mm	kg	
2-stage limited free lift	V300	3,005	4,185	2,082	115	115	115	6	10	3,200	3,200	3,005	4,799
	※V330	3,305	4,485	2,232	115	115	115	6	10	3,200	3,200	3,305	4,820
	V350	3,505	4,685	2,332	115	115	115	6	10	3,200	3,075	3,505	4,828
	V370	3,705	4,885	2,482	115	115	115	6	10	3,190	3,065	3,660	4,846
	V400	4,005	5,185	2,632	115	115	115	6	10	3,120	2,995	3,650	4,863
	V450	4,505	5,685	2,932	115	115	115	6	6	3,000	2,875	3,450	4,933
	V500	5,005	6,185	3,182	115	115	115	6	6	2,900	2,775	3,300	4,962
2-stage full free lift	VF295	2,976	4,156	2,082	913	1,377	1,377	6	6	3,200	3,200	2,976	4,846
	VF/ VS325	3,276	4,456	2,232	1,063	1,527	1,527	6	6	3,200	3,200	3,276	4,869
3-stage full free lift	TF400	4,005	5,185	1,982	802	1,212	1,212	6	6	3,120	2,995	3,650	5,021
	TF430	4,305	5,485	2,082	902	1,312	1,312	6	6	3,060	2,935	3,620	5,030
	TF450	4,505	5,685	2,182	1,002	1,412	1,412	6	6	3,010	2,885	3,600	5,072
	TF470	4,705	5,885	2,232	1,052	1,462	1,462	6	6	2,980	2,855	3,570	5,087
	TF500	5,005	6,185	2,332	1,152	1,562	1,562	6	6	2,500	2,390	3,550	5,111
	TF550	5,505	6,685	2,532	1,352	1,762	1,762	6	6	2,200	2,020	3,500	5,156
	TF600	6,005	7,185	2,732	1,552	1,962	1,962	6	6	1,500	1,320	3,450	5,200
	TF650	6,505	7,685	2,932	1,752	2,162	2,061	3	3	1,450	1,280	3,400	5,244
	TF700	7,005	8,185	3,132	1,952	2,362	2,261	3	3	1,250	1,080	3,300	5,289
	TS400	4,005	5,185	1,982	802	1,212	1,212	6	6	3,120	2,995	3,650	5,021
	TS430	4,305	5,485	2,082	902	1,312	1,312	6	6	3,060	2,935	3,620	5,030
	TS450	4,505	5,685	2,182	1,002	1,412	1,412	6	6	3,010	2,885	3,600	5,072
	TS470	4,705	5,885	2,232	1,052	1,462	1,462	6	6	2,980	2,855	3,570	5,087
	TS500	5,005	6,185	2,332	1,152	1,562	1,562	6	6	2,500	2,390	3,550	5,111
TS550	5,505	6,685	2,532	1,352	1,762	1,762	6	6	2,200	2,020	3,500	5,156	
TS600	6,005	7,185	2,732	1,552	1,962	1,962	6	6	1,500	1,320	3,450	5,200	
TS650	6,505	7,685	2,932	1,752	2,162	2,033	3	3	1,450	1,280	3,400	5,244	
TS700	7,005	8,185	3,132	1,952	2,362	2,233	3	3	1,250	1,080	3,300	5,289	
4-stage full free lift	QF610	6,115	7,295	2,136	967	1,514	1,514	3	3	1,800	1,620	3,200	5,368
	QF700	7,015	8,195	2,436	1,267	1,814	1,814	3	3	1,300	1,120	3,000	5,458
	QF790	7,915	9,095	2,736	1,567	2,070	1,917	3	3	800	375	2,800	5,604

※ TF-Mast : Wide visible 3-stage full free lift mast with 1 free lift cylinder  
 ※ TS-Mast : Wide visible 3-stage full free lift mast with 2 free lift cylinders

※ : Standard

# MAST SPECIFICATIONS

35B-9U													
Mast type	Maximum fork height	Maximum mast height, extended with backrest	Overall height (lowered)	Free lift height			Tilt angle		Load capacity (500 mm LC) w/o side shift	Load capacity (500 mm LC) hook-on side shift	Maximum lifting height with rated capacity STD attachment	Truck weight (unloaded)	
				W/ load backrest	W/o load backrest	W/o load backrest (3/4-SPOOL)	Fwd	Bwd					
	mm	mm	mm	mm	mm	mm	deg	deg	kg	kg	mm	kg	
2-stage limited free lift	V300	3,005	4,185	2,093	115	115	115	6	10	3,500	3,500	3,005	4,999
	※V330	3,305	4,485	2,243	115	115	115	6	10	3,500	3,500	3,305	5,020
	V350	3,505	4,685	2,343	115	115	115	6	10	3,500	3,500	3,505	5,028
	V370	3,705	4,885	2,493	115	115	115	6	10	3,500	3,500	3,705	5,046
	V400	4,005	5,185	2,643	115	115	115	6	10	3,500	3,430	4,005	5,063
	V450	4,505	5,685	2,943	115	115	115	6	6	3,450	3,300	4,200	5,133
	V500	5,005	6,185	3,193	115	115	115	6	6	3,300	3,150	4,000	5,162
2-stage full free lift	VF295	2,976	4,165	2,093	913	1,377	1,377	6	6	3,500	3,500	2,976	5,046
	VF/ VS325	3,276	4,456	2,243	1,063	1,527	1,527	6	6	3,500	3,430	3,276	5,069
3-stage full free lift	TF400	4,005	5,185	1,993	813	1,277	1,277	6	6	3,500	3,350	4,005	5,221
	TF430	4,305	5,485	2,093	913	1,377	1,377	6	6	3,450	3,300	3,950	5,230
	TF450	4,505	5,685	2,193	1,013	1,477	1,477	6	6	3,400	3,250	3,850	5,272
	TF470	4,705	5,885	2,243	1,063	1,527	1,527	6	6	3,350	3,200	3,750	5,287
	TF500	5,005	6,185	2,343	1,163	1,627	1,627	6	6	2,650	2,500	3,700	5,311
	TF550	5,505	6,685	2,543	1,363	1,827	1,827	6	6	2,380	2,250	3,650	5,356
	TF600	6,005	7,185	2,743	1,563	2,027	2,027	6	6	1,700	1,550	3,600	5,400
	TF650	6,505	7,685	2,943	1,763	2,201	2,061	3	3	1,590	1,450	3,350	5,444
	TF700	7,005	8,185	3,143	1,963	2,401	2,261	3	3	1,350	1,250	3,200	5,489
	TS370	3,705	4,885	1,893	713	1,177	1,177	6	6	3,500	3,430	3,705	5,199
	TS400	4,005	5,185	1,993	813	1,277	1,277	6	6	3,500	3,350	4,005	5,221
	TS430	4,305	5,485	2,093	913	1,377	1,377	6	6	3,450	3,300	3,950	5,230
	TS450	4,505	5,685	2,193	1,013	1,477	1,477	6	6	3,400	3,250	3,850	5,272
	TS470	4,705	5,885	2,243	1,063	1,527	1,527	6	6	3,350	3,200	3,750	5,287
TS500	5,005	6,185	2,343	1,163	1,627	1,627	6	6	2,650	2,500	3,700	5,311	
TS550	5,505	6,685	2,543	1,363	1,827	1,827	6	6	2,380	2,250	3,650	5,356	
TS600	6,005	7,185	2,743	1,563	2,027	2,027	6	6	1,700	1,550	3,600	5,400	
TS650	6,505	7,685	2,943	1,763	2,201	2,061	3	3	1,590	1,450	3,350	5,444	
TS700	7,005	8,185	3,143	1,963	2,373	2,233	3	3	1,350	1,250	3,200	5,489	
4-stage full free lift	QF610	6,115	7,295	2,147	967	1,514	1,514	3	3	1,920	1,800	3,100	5,568
	QF700	7,015	8,195	2,447	1,267	1,814	1,814	3	3	1,410	1,300	2,900	5,658
	QF790	7,915	9,095	2,747	1,567	2,070	1,917	3	3	800	700	2,700	5,804

※ TF-Mast : Wide visible 3-stage full free lift mast with 1 free lift cylinder  
 ※ TS-Mast : Wide visible 3-stage full free lift mast with 2 free lift cylinders

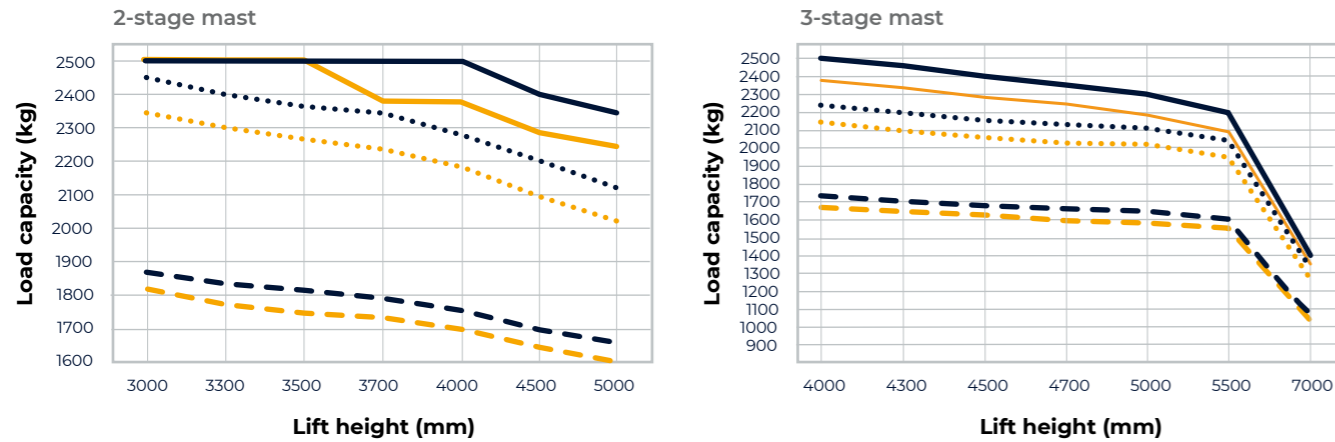
※ : Standard



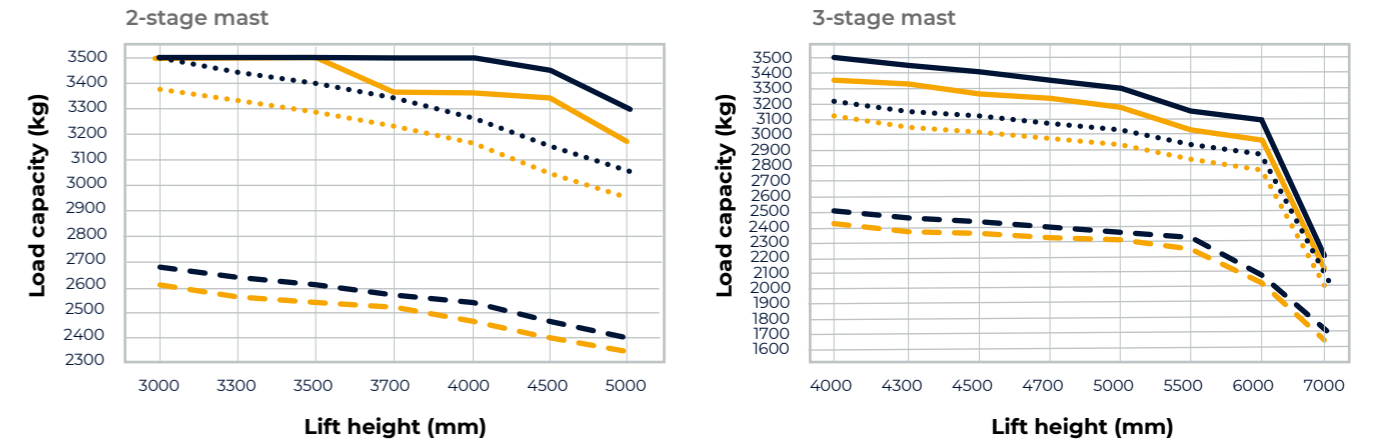
# LOAD CAPACITY

- LC500 mm Intergrated side shift
- LC500 mm No attachment
- LC600 mm Intergrated side shift
- LC600 mm No attachment
- - - LC1000 mm Intergrated side shift
- - - LC1000 mm No attachment

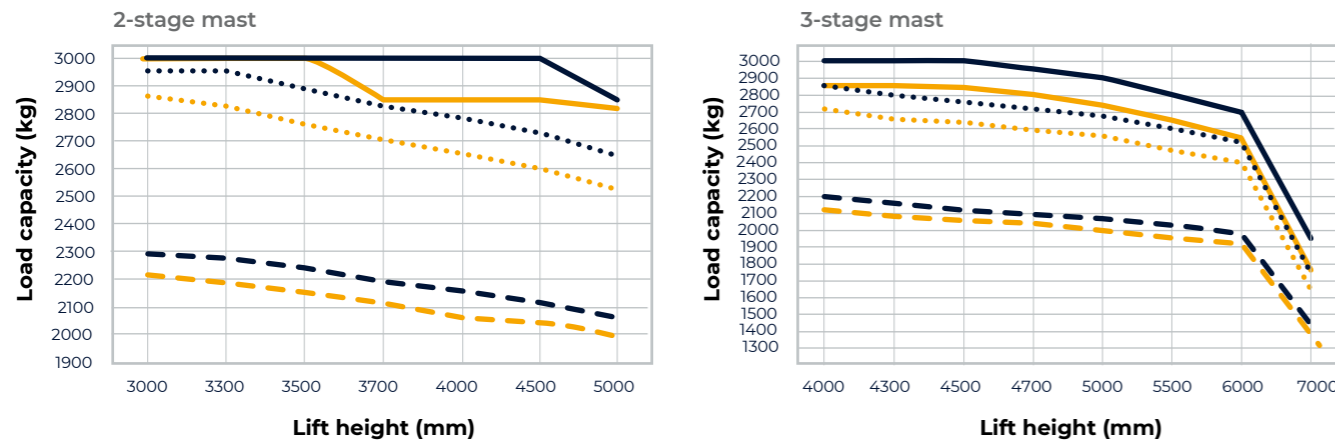
## 25B-9U



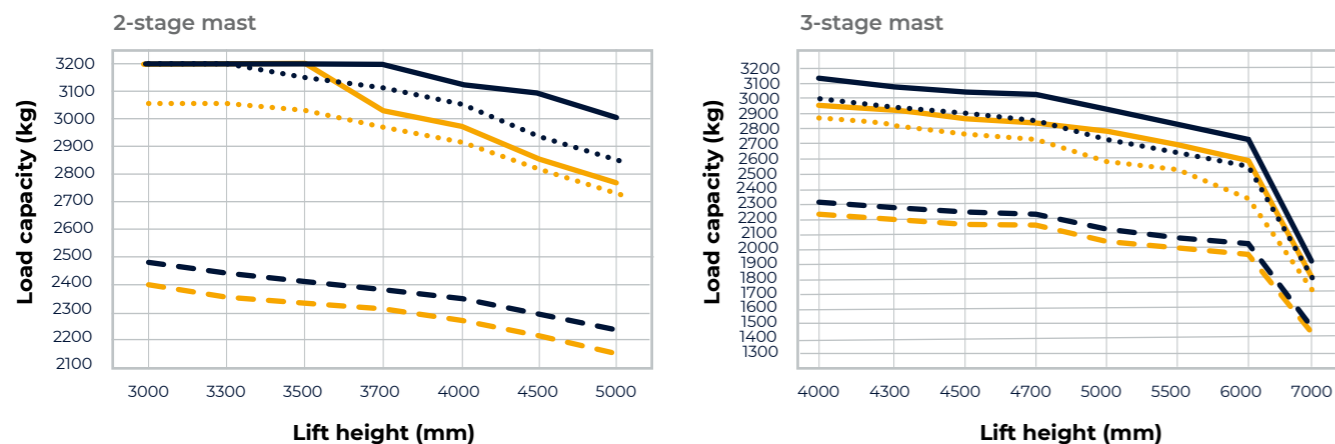
## 35B-9U



## 30B-9U



## 32B-9U



# STANDARD AND OPTIONAL EQUIPMENT

Equipment	STD	OPT
<b>Fork (mm) - 25B-9U</b>		
900		•
1,000		•
1,050		•
1,200	•	
1,350		•
1,500		•
1,650		•
1,800		•
2,100		•
<b>Fork (mm) - 30/32/35B-9U</b>		
900		•
1,050	•	
1,150		•
1,200		•
1,350		•
1,500		•
1,650		•
1,800		•
1,970		•
2,120		•
2,300		•
2,400		•

Equipment	STD	OPT
Integral side shift		•
Integral fork-positionner (revolution-kit)		•
Fingertip control		•
<b>Tyre:</b>		
Solid	•	
Pneumatic / non-marking wide [25/30/32B-9U : Front (23X10-12)]		•
Basic cold storage: applicable to work conditions of up to -30°C		•
<b>M.C.V.:</b>		
3-spool	•	
4-spool		•
Auto fork leveling		•
Load weight indicator		•
Cabin (one-door & two-door) with heater, semi-cabin options		•
Vertical battery removal		•

All specifications in these tables are based on 900 mm forks.



- \* Standard and optional equipment may vary by country. Contact your Hyundai dealer for more information.
- \* The machine may vary according to international standards. European specifications may differ from Korean specifications mentioned in the brochures.
- \* The photos may include attachments and optional equipment that are not available in your area.
- \* Materials and specifications are subject to change without advance notice.
- \* All imperial measurements are rounded off to the nearest pound or inch.

Hyundai Construction Equipment Europe NV  
Hyundailaan 4, 3980 Tessenderlo, Belgium  
Tel: (+32) 14-56-2200 Fax: (+32) 14-59-3405

Doc. nr.: EN-202101 Rev0

Contact your Hyundai dealer.  
[hyundai-mh.eu](http://hyundai-mh.eu)



**Address**



**Handling Machinery LTD**

HHF037A, Industrial estate  
BBG 3000 HAL-FAR  
Malta

+356 2148 56 81

[info@rcvmalta.com](mailto:info@rcvmalta.com)